



Multi player

CDJ-1500X

Firmware Update Guide

How to check the version:

- 1 Turn on the power of the CDJ-1500X.
- 2 Touch (Menu) on the status bar. The menu is displayed.
- 3 Touch [UTILITY]. The [UTILITY] screen is displayed.
- 4 Touch [INFO] on the [UTILITY] screen. The [Version No.] appears .
- 5 Touch [x] on the title/status bar to close the [UTILITY] screen.

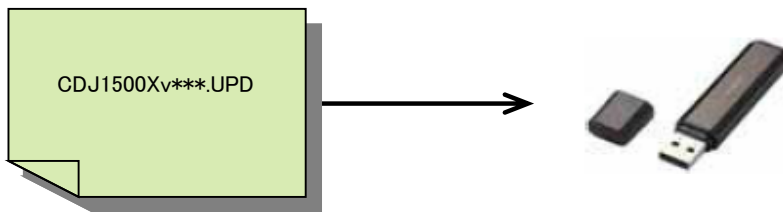
Preparation for update:

- 1 Unzip the .zip file on your computer.

Unzip the downloaded [CDJ1500Xv***.zip] file to find the following update file.
Please make sure the unzipped update file is CDJ1500Xv***.UPD.

CDJ-1500Xv***.UPD

- 2 Copy the unzipped update file to the root directory of a USB storage device.



- * DO NOT rename the file name.
- * Please use a USB storage device (USB Mass Storage Class-compliant) formatted in FAT or FAT32.

How to update:

1 Enter the update mode:

Connect the supplied AC adapter.

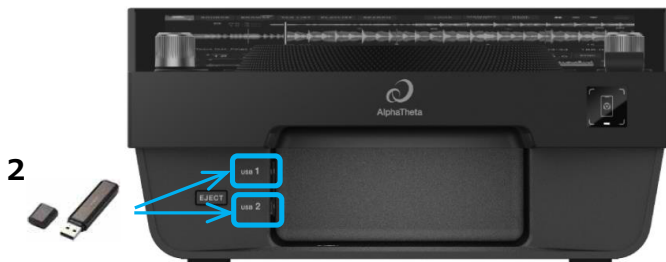
Ensure that the CDJ-1500X is powered off and no USB storage device and USB cable is connected.

Then, turn on the power while pressing both the [HOT CUE A] and [HOT CUE C] buttons simultaneously.

When the main display lights up, please release your fingers from the buttons.



2 When the message "Connect USB storage device into USB1 port." appears, insert the USB storage device containing the copied update file into the USB port (USB1 or USB2).



3 The update starts automatically and the progress bar is displayed.
Both the current and the updated versions are shown there simultaneously.

* DO NOT remove the USB storage device or turn off the power during the update.

When the update is finished, the below complete message is displayed:
"Firmware update is complete. Turn the power off/on before using."

4 When the complete message *is displayed* , turn the power off.

Follow "How to check the version" to check the firmware version to make sure that the firmware has been updated.

Then disconnect the USB storage device.

If the update process does not start or "MAIN update file is corrupt." is displayed, the downloaded file might be corrupted.

In that case, start over the update process again from downloading the update file.

If the update process still fails even after that, please try another USB storage device because the USB device could cause the failure.

If the progress bar does not advance or an error message such as "MAIN firmware update failed" is displayed, please contact the Customer Support. alphatheta.com/support/

Network Update

The CDJ-1500X can download and install the latest updater directly on the device when connected to a network.

Update notification badge appears when network updates are available

When connected to a network, an update notification badge will appear in the following area if the latest firmware is available.

- The update notification badge is displayed in the [Info] section of the [UTILITY] screen.
- "New Firmware(x.xx) Available" is displayed on the right of [Version No].

Instructions for Network Update

When the update notification badge appears, the Network Update is ready. Make sure that the following conditions are met:

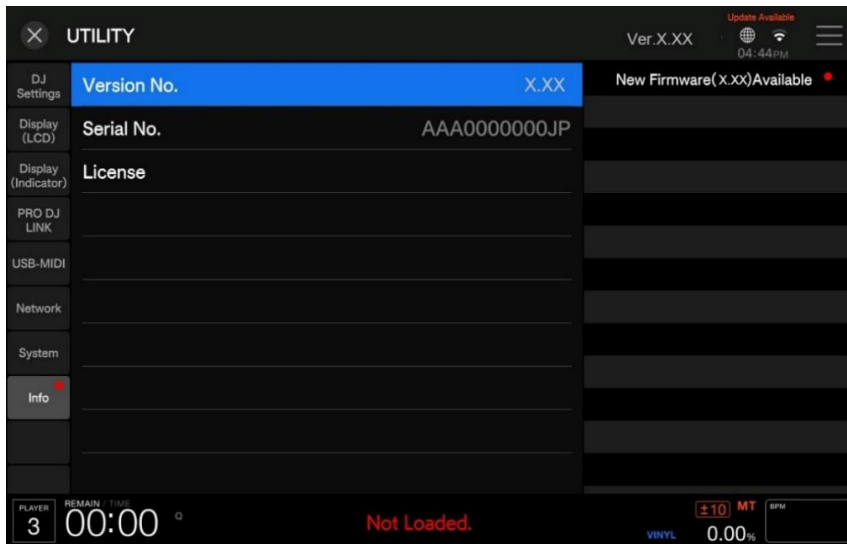
- Turn on the power
- Connect to a network

1 Launch the Network Update

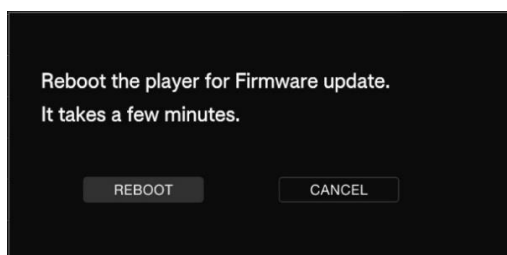
Touch [Info] on the [UTILITY] screen. [Version No.] is displayed.

"New Firmware(x.xx) Available" appears on the right.

Touch "New Firmware(x.xx) Available."



When the following caution appears, select REBOOT.
"Reboot the player for Firmware update. It takes a few minutes."



2 Reboot starts automatically.

3 After the reboot, the update will automatically start and the progress bar will be displayed. At the same time, the current version and the version after the update are displayed.

Note: Do not change the network environment or turn off the power during the update.

When the update is finished, the below complete message is displayed:
"Firmware update is complete. Turn the power off/on before using."

4 When the complete message *is displayed* , turn the power off.

Follow "How to check the version" to check the firmware version to make sure that the firmware has been updated.

If the progress bar does not advance or an error message such as "MAIN firmware update failed" is displayed, please contact the Customer Support.

alphatheta.com/support/