

# AlphaTheta

# *Service Manual*



SLAB

ORDER NO.  
**DRT2038**

Music Production Controller

# SLAB/WXJ



**AlphaTheta Corporation**  
6F, Yokohama i-Mark Place, 4-4-5 Minatomirai, Nishi-ku, Yokohama, Kanagawa 220-0012 JAPAN

# SAFETY INFORMATION



A

This service manual is intended to support DIV enthusiasts and AlphaTheta Corporation is not responsible for repairs to or replacement of your product if damage occurs during a self-repair. You understand and agree that any self-repairs on your product are done solely at your own risk and that AlphaTheta Corporation shall have no liability for any damage occurring as a result of a self-repair.

B

It is strongly advised that a trained and qualified individual performs the repairs properly and safely. If you are not qualified to perform repairs on this product in a proper and safe manner, you should not attempt to do so and instead refer the repair to a qualified service technician.

B

# CONTENTS

- SAFETY INFORMATION ..... 2
- 1. SPECIFICATIONS ..... 3
- 2. BASIC ITEMS FOR SERVICE ..... 3
- 3. DIAGNOSIS..... 4
  - 3.1 ABOUT ERROR..... 4
- 4. DISASSEMBLY ..... 4
- 5. UPDATAING THE FIRMWARE ..... 5
  - 5.1 HOW TO CHECK THE CURRENT FIRMWARE ..... 5
  - 5.2 HOW TO UPDATE THE FIRMWARE..... 5
- 6. EXPLODED VIEWS AND PARTS LIST ..... 6
  - 6.1 PACKING SECTION..... 6
  - 6.2 EXTERIOR SECTION ..... 7

C

D

E

F

5 6 7 8

# 1. SPECIFICATIONS

**General - Main Unit**

**Rated power supply**

Power..... DC 5 V

Rated current ..... 500 mA

Main unit weight..... 1.0 kg (2.2 lbs.)

Max. dimensions (W × D × H)..... 284.3 × 209.0 × 44.6 mm  
(11.19" × 8.23" × 1.76")

Tolerable operating temperature..... +5 °C – +35 °C (41 °F – +95 °F)

Tolerable operating humidity..... 5 % – 85 % (no condensation)

**Input / Output terminal**

USB port

USB Type-C..... 1 set

• The specifications and design of this product are subject to change without notice.

**■ Accessories**

- USB cable x 1 (46-008574-002-R000)
- Quick Start Guide x 1 (91-003069-020-R000)
- Sub Manual x 1 (91-003070-010-R000)
- Warranty (some regions)\* x 1

\* Only or products for the European market. (The warranty for Japan and North America is printed in the Precautions for Use.)

# 2. BASIC ITEMS FOR SERVICE

## 2.1 CHECK POINTS AFTER SERVICING

**Items to be checked after servicing**

To maintain product quality, confirm the recommended check points shown below.

No	Procedure	Check points
1	Confirm the firmware version.	The firmware must be the latest version. If not the most current version, update the firmware must be latest.
2	Check the connection of interface.	
	Check connection with PC via USB terminal.	Turn on the unit and check that it is correctly recognized by the PC.

SLAB

5 6 7 8

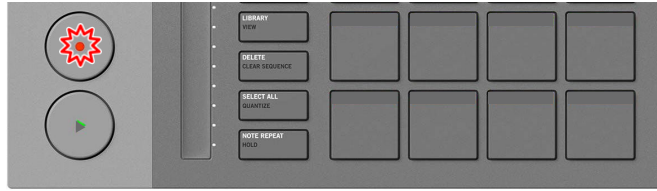
3

# 3. DIAGNOSIS

## 3.1 ABOUT ERROR

A

If the product detects a hardware problem during startup or operation, the LED will flash to notify the user of the problem. When an error is detected, the [REC] button LED will flash in 1-second cycles.



B

In this case, it seems to be an internal hardware failure. Refer repair to a qualified technician.

C

# 4. DISASSEMBLY

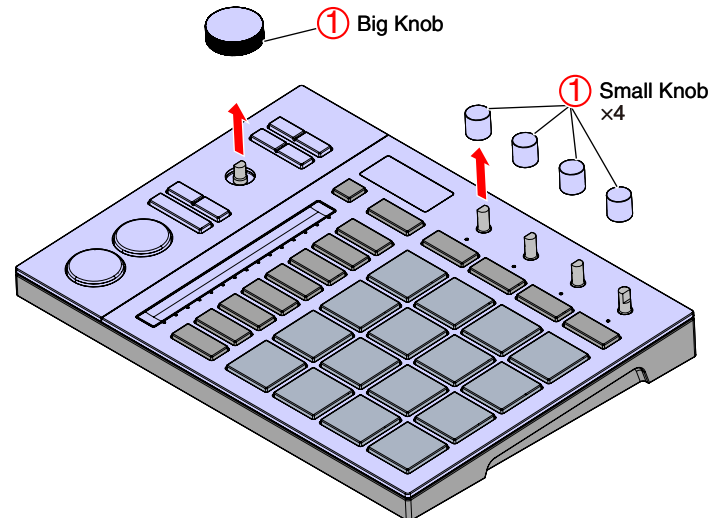
**Note:** Even if the unit shown in the photos and illustrations in this manual may differ from your product, the procedures described here are common.

### [1] EXTERIOR

#### [1-1] Knobs

① Remove all knobs.

D



E

F

# 5. UPDATING THE FIRMWARE

## 5.1 HOW TO CHECK THE CURRENT FIRMWARE

1. Connect your SLAB to your PC/Mac using the USB cable.
2. Opne the Utility screen. Press and hold the [STRIP MODE] button.
3. Check the firmware version.

The firmware version is displayed on the [OLED display]

## 5.2 HOW TO UPDATAING THE FIRMWARE

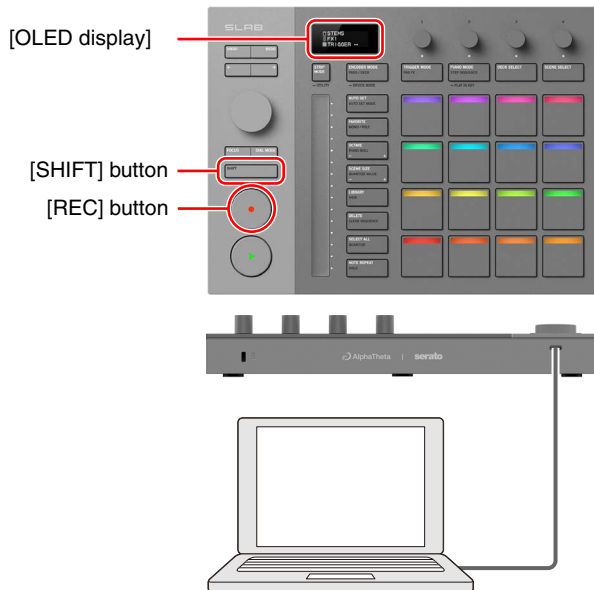
### Preparations

- 1 Download the ZIP file for the firmware update from the URL below.  
<https://support.alphatheta.com/en-US/products/50303541909785?section=25>
- 2 Place the unzipped files in the same directory on PC.

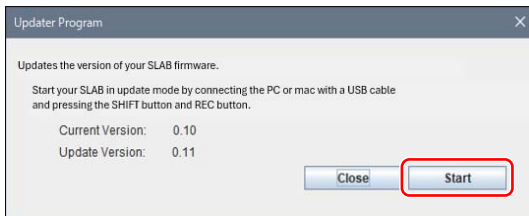
- For Mac:  
Check the following file is included in the extracted [SLAB\_vxxx\_MAC] folder.  
[SLAB\_vxxx.app]
- For Windows:  
Check the following file is included in the extracted [SLAB\_vxxx\_WIN] folder.  
[SLAB\_vxxx.exe]  
"xxx" is the version number.

### Procedure

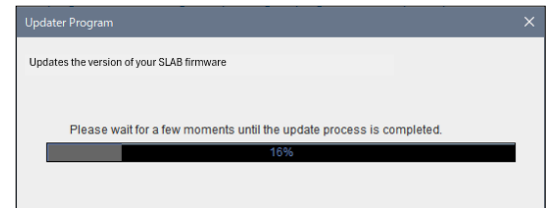
- ① While pressing the [SHIFT] and [REC] buttons, connect the product to PC with a USB.
- ② "UPDATE" will appear on the [OLED display] and the product will start up in update mode.



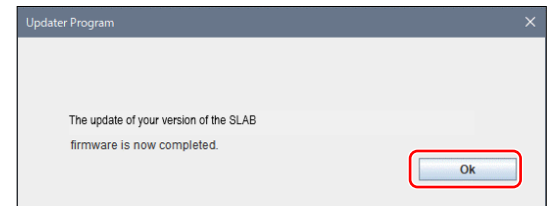
- ③ Double-click "SLAB\_vxxx.exe" (for Windows) or "SLAB\_vxxx.app" (for Mac) and execute it.
- ④ Check that the version is correct and click "Start."



- ⑤ A progress bar appears in the dialog box on the screen. The progress bar is changed depending on progress of the update process.



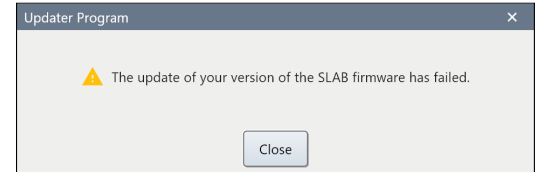
- ⑥ When the update process is complete, a dialog box to inform that appears on the screen. Click "OK".



When the update process completes, the product automatically reboots.

Check that the firmware has been updated.

\*For instructions on how to check, please refer to "5.1 How to check the current firmware" in this chapter.



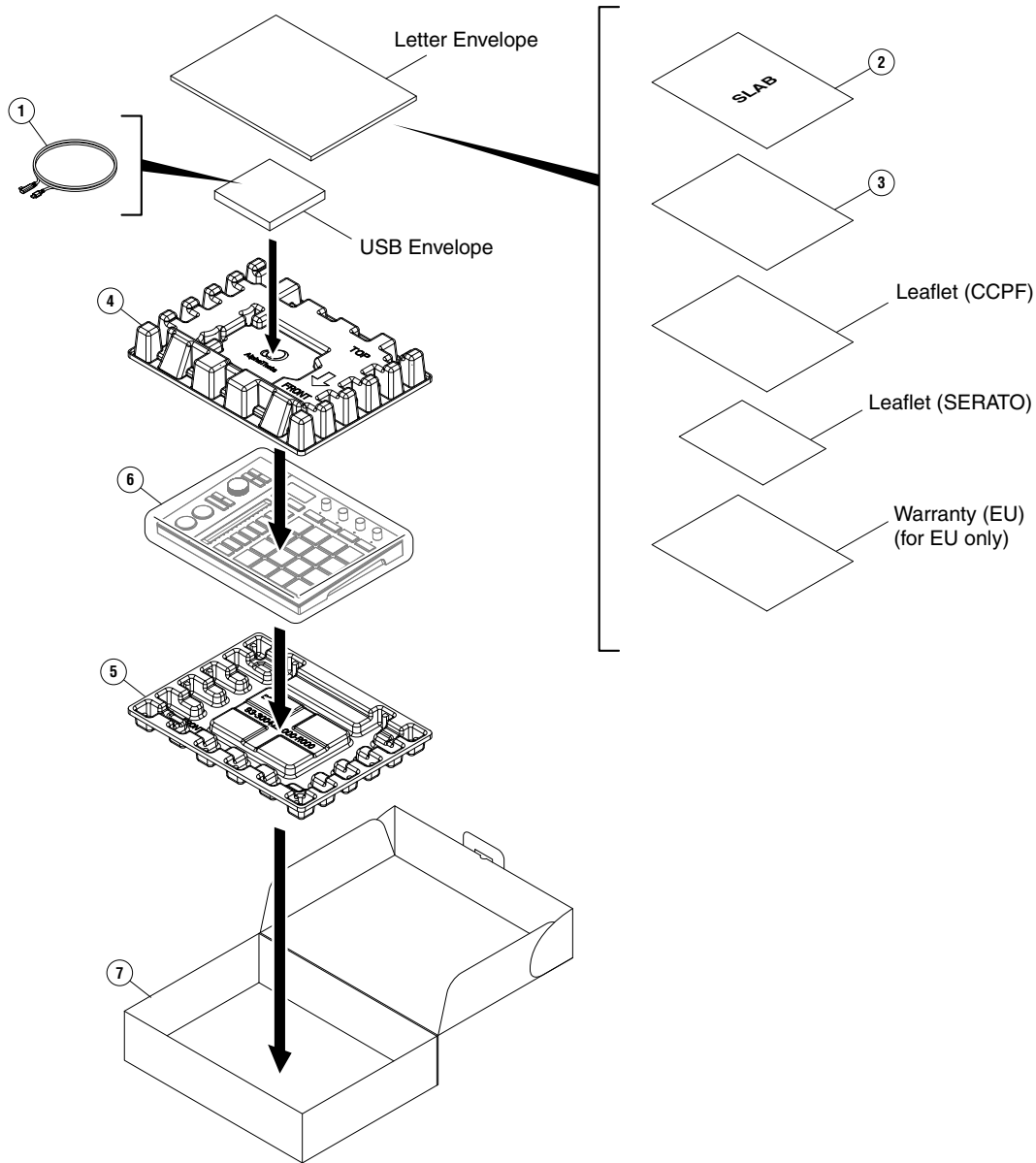
### Tips: When you fail to update the firmware

If you fail to update, close the update program, disconnect the USB cable, reconnect the SLAB to your PC/Mac using the USB cable, and start from "Procedure ①" again.

# 6 EXPLODED VIEWS AND PARTS LIST

NOTES: ● Parts marked by "NSP" are generally unavailable because they are not in our Master Spare Parts List.  
 ● The  $\triangle$  mark found on some component parts indicates the importance of the safety factor of the part. Therefore, when replacing, be sure to use parts of identical designation.

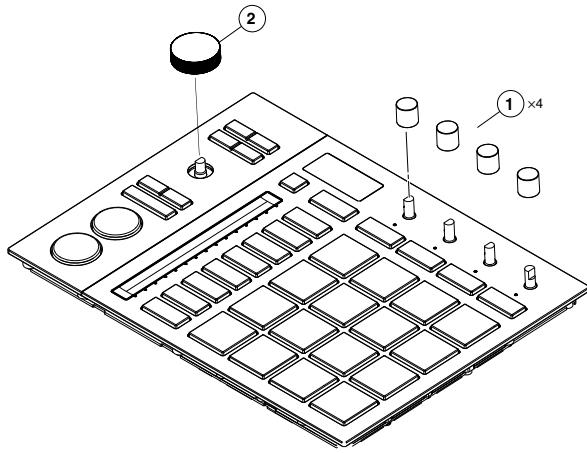
## 6.1 PACKING SECTION



### (1) PACKING SECTION PARTS LIST

Mark No.	Description	Part No.	Mark No.	Description	Part No.
1	USB cable	46-008574-002-R000	NSP 6	Mirror Mat	• • • •
2	Quick Start Guide	91-003069-020-R000	NSP 7	Giftbox	• • • •
3	Sub Manual	91-003070-010-R000			
NSP 4	Pulp Molded Pad (A)	• • • •			
NSP 5	Pulp Molded Pad (B)	• • • •			

# 6.2 EXTERIOR SECTION



## (1) EXTERIOR SECTION PARTS LIST

<u>Mark No.</u>	<u>Description</u>	<u>Part No.</u>
1	Small Knob	30-009326-002-R000
2	Big Knob	30-009311-002-R000